

est 1979

Jeremy
Leaf & Co.



Flat 1|., 101 Nether Street, North Finchley, N12 7NP

£625,000

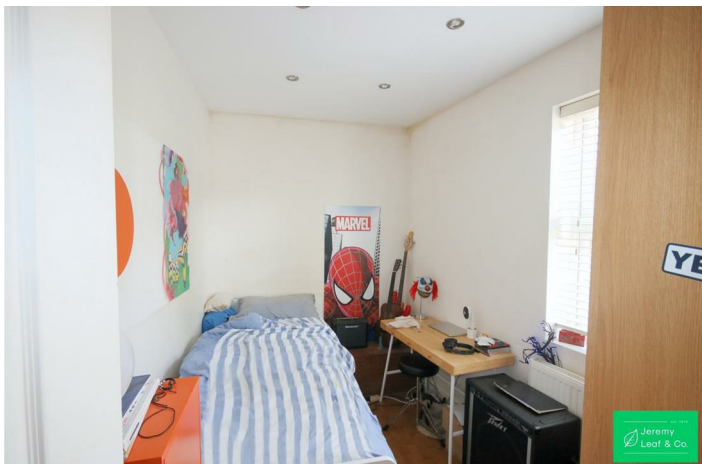
- Two Bathrooms (One en suite)
- Private Garden
- Reception Room
- Current Rental income £1,900pcm
- Kitchen
- Three Bedrooms
- 0.5 m to Woodside Park Tube Station

101 Nether Street, North Finchley N12 7NP

A three bedroom, two bathroom (one en-suite) ground floor flat with own private garden. Located 0.5 miles from Woodside Park (Northern Line) Station, this property would make a good first time buy or rental investment. New leases will be granted with the share of the freehold and service charges will be based on size. For a virtual tour click on the link provided.

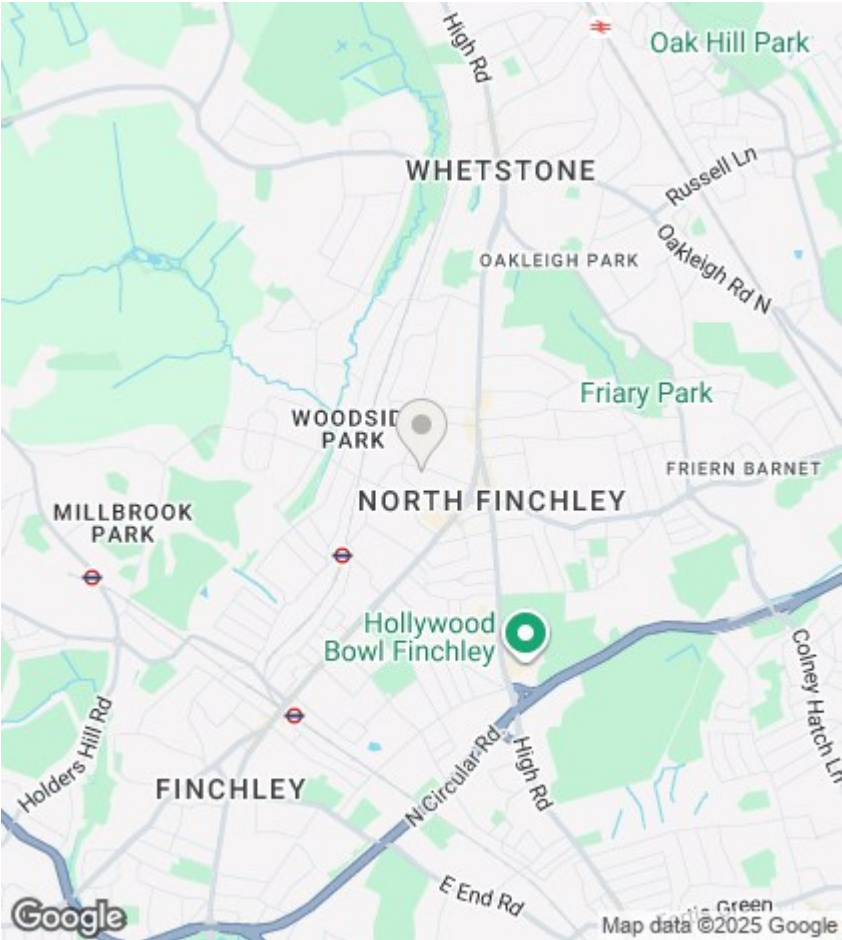


Council Tax Band: D



Full Description

A three bedroom, two bathroom (one en-suite) ground floor flat with own private garden. Located 0.5 miles from Woodside Park (Northern Line) Station, this property would make a good first time buy or rental investment. New leases will be granted with the share of the freehold and service charges will be based on size. For a virtual tour click on the link provided.



Directions

Viewings

Viewings by arrangement only. Call 020 8446 4295 to make an appointment.

EPC Rating:

Energy Efficiency Rating		
	Current	Potential
Very energy efficient - lower running costs		
(92 plus) A		
(81-91) B		
(69-80) C		
(55-68) D		
(39-54) E		
(21-38) F		
(1-20) G		
Not energy efficient - higher running costs		
England & Wales		EU Directive 2002/91/EC